

Open Baffel Aktiv Analog filter:

- Diagram
- Simulation
- Trim -1 to Final. (for now).

Simulation: Trim 1

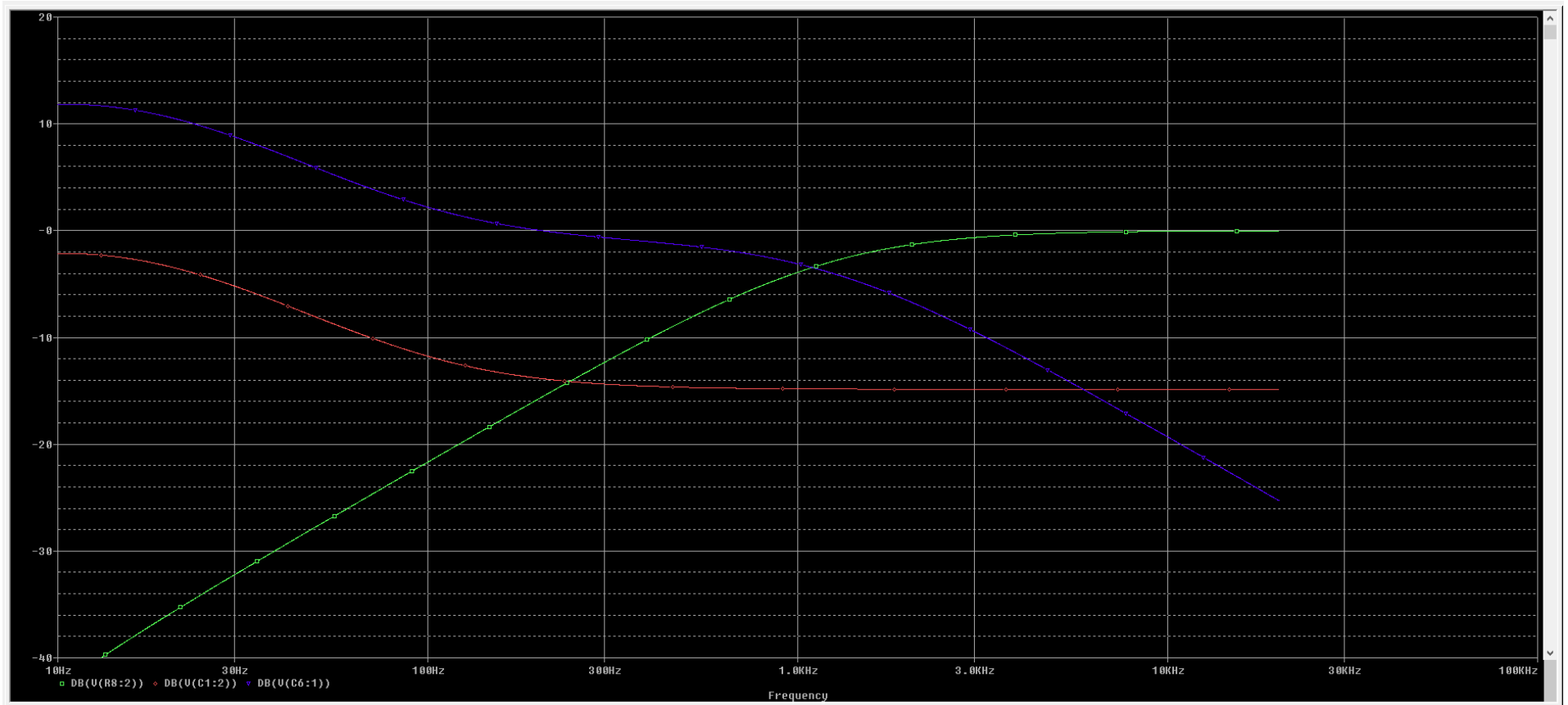
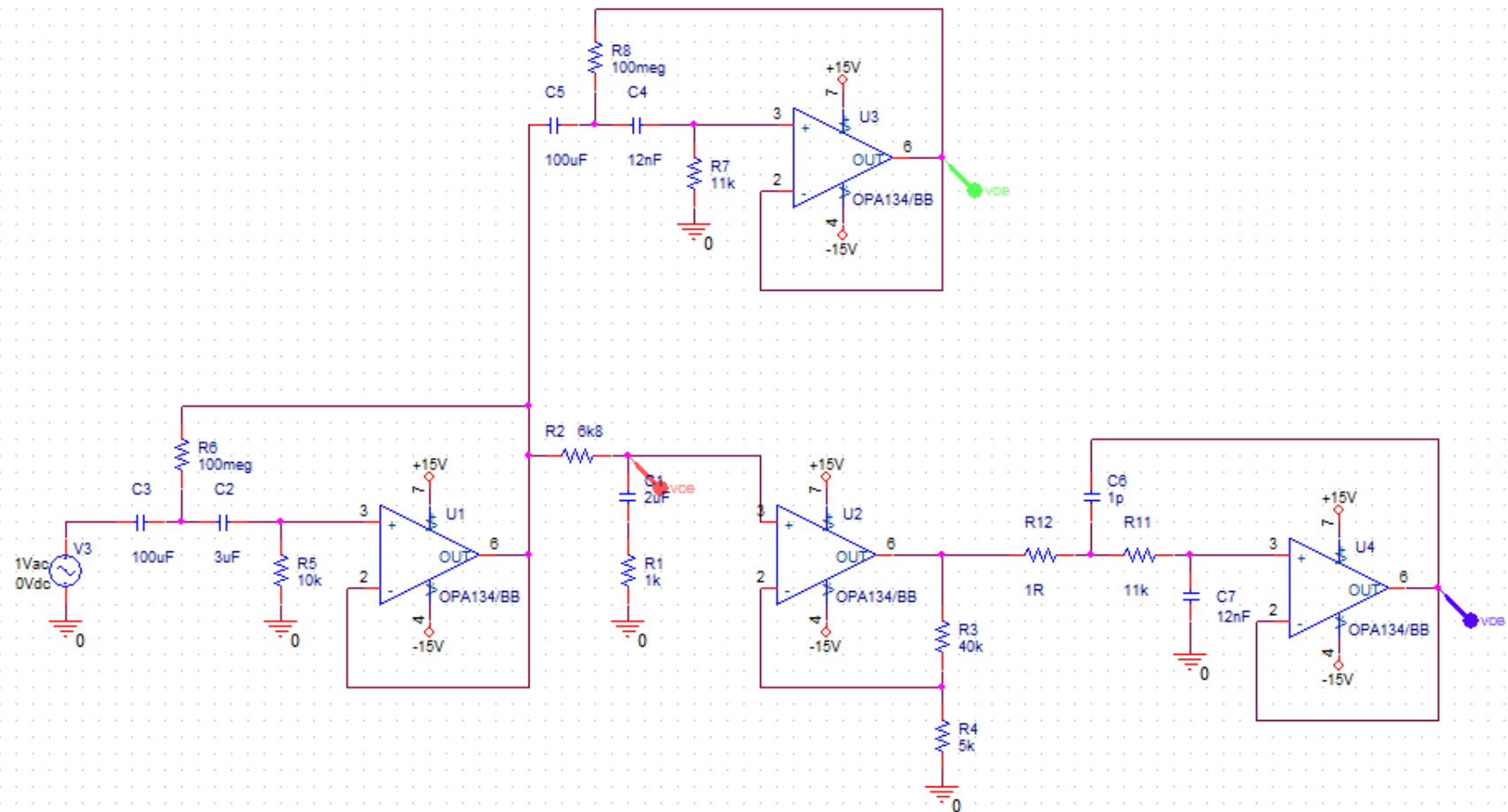


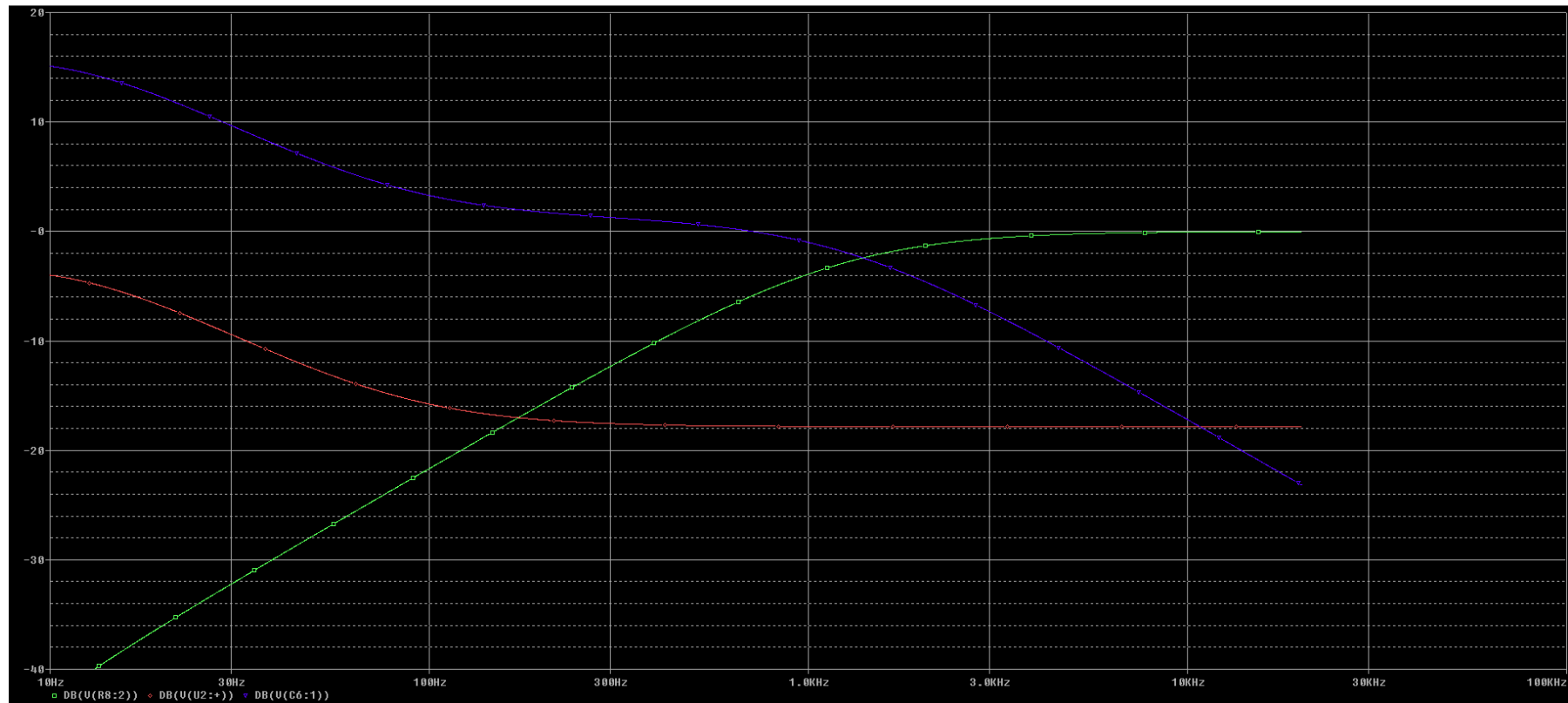
Diagram trim 2



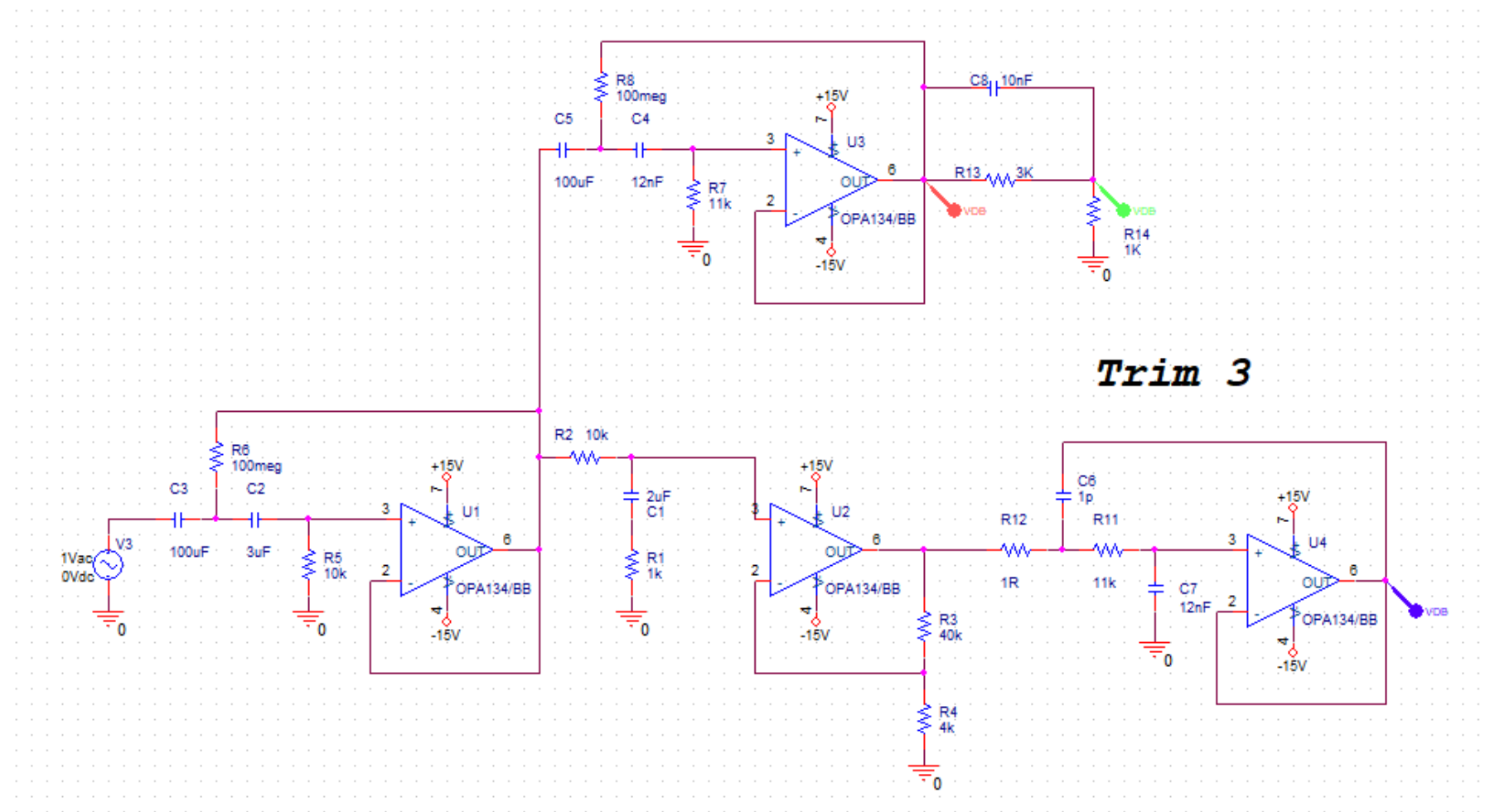
Fo for Compensation changes one Octave down (C1).

More Gain in U2 stages.

Simulation trim 2:

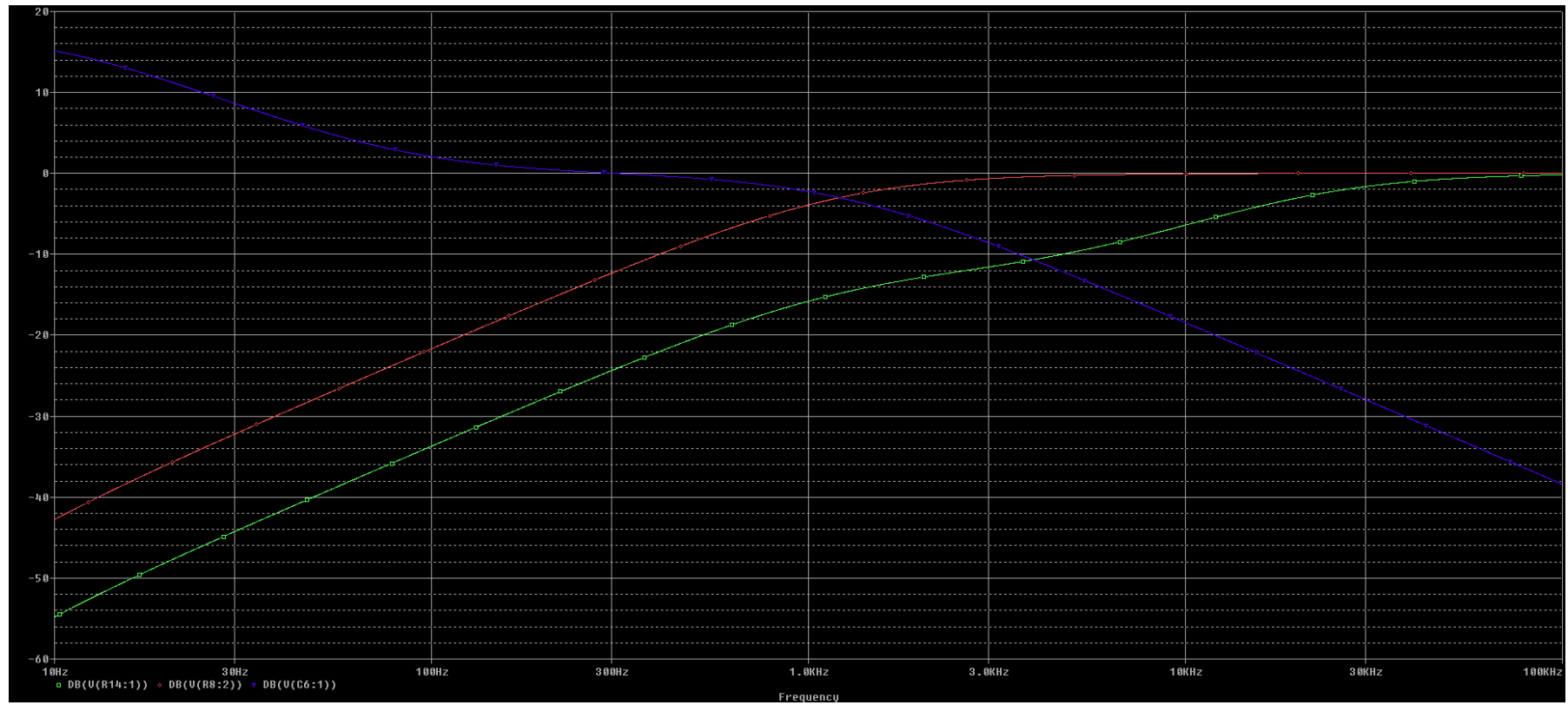


Trim 3:



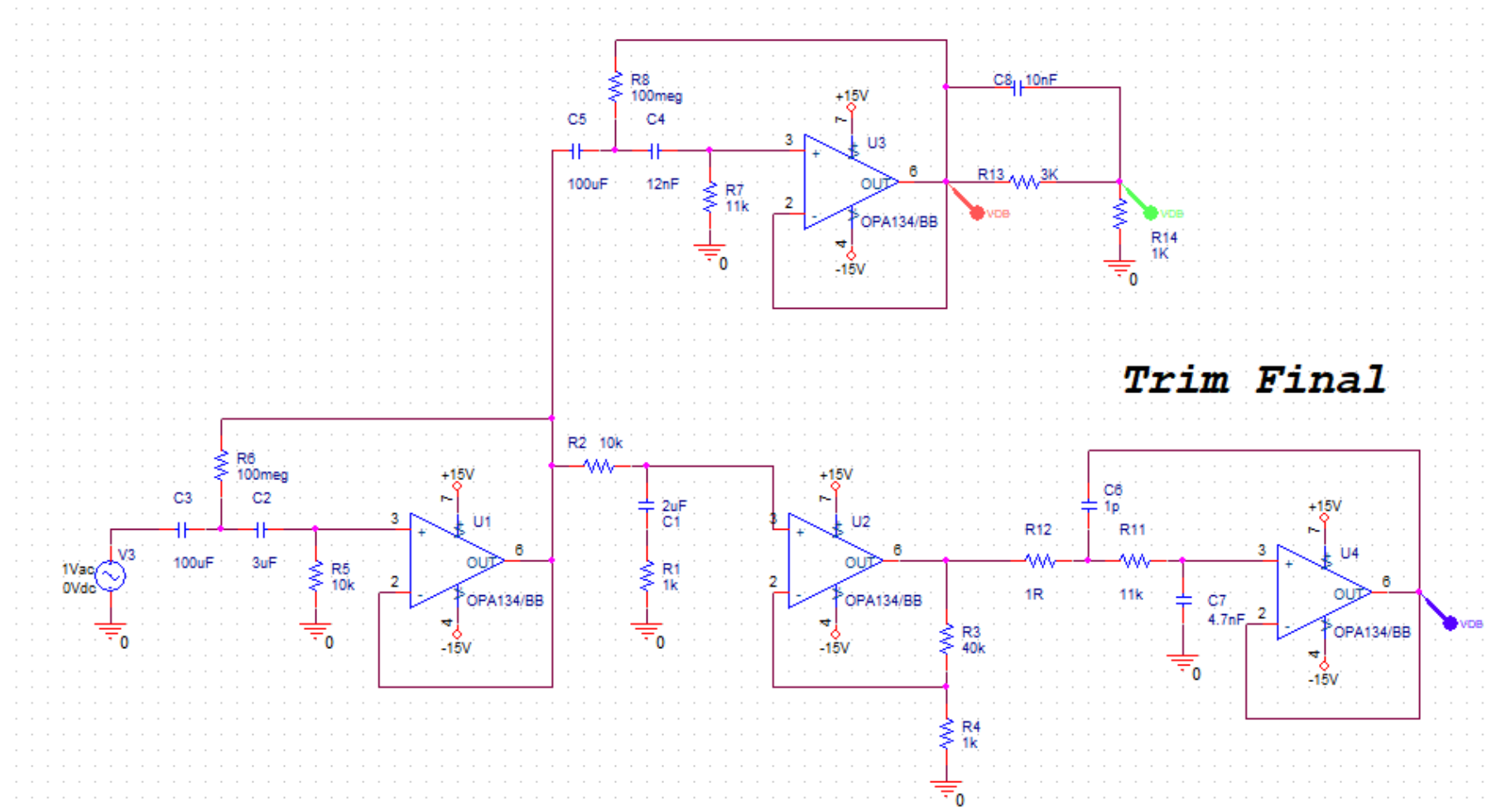
More Extended Low end compensation .. and 2" compensation from 5Khz.

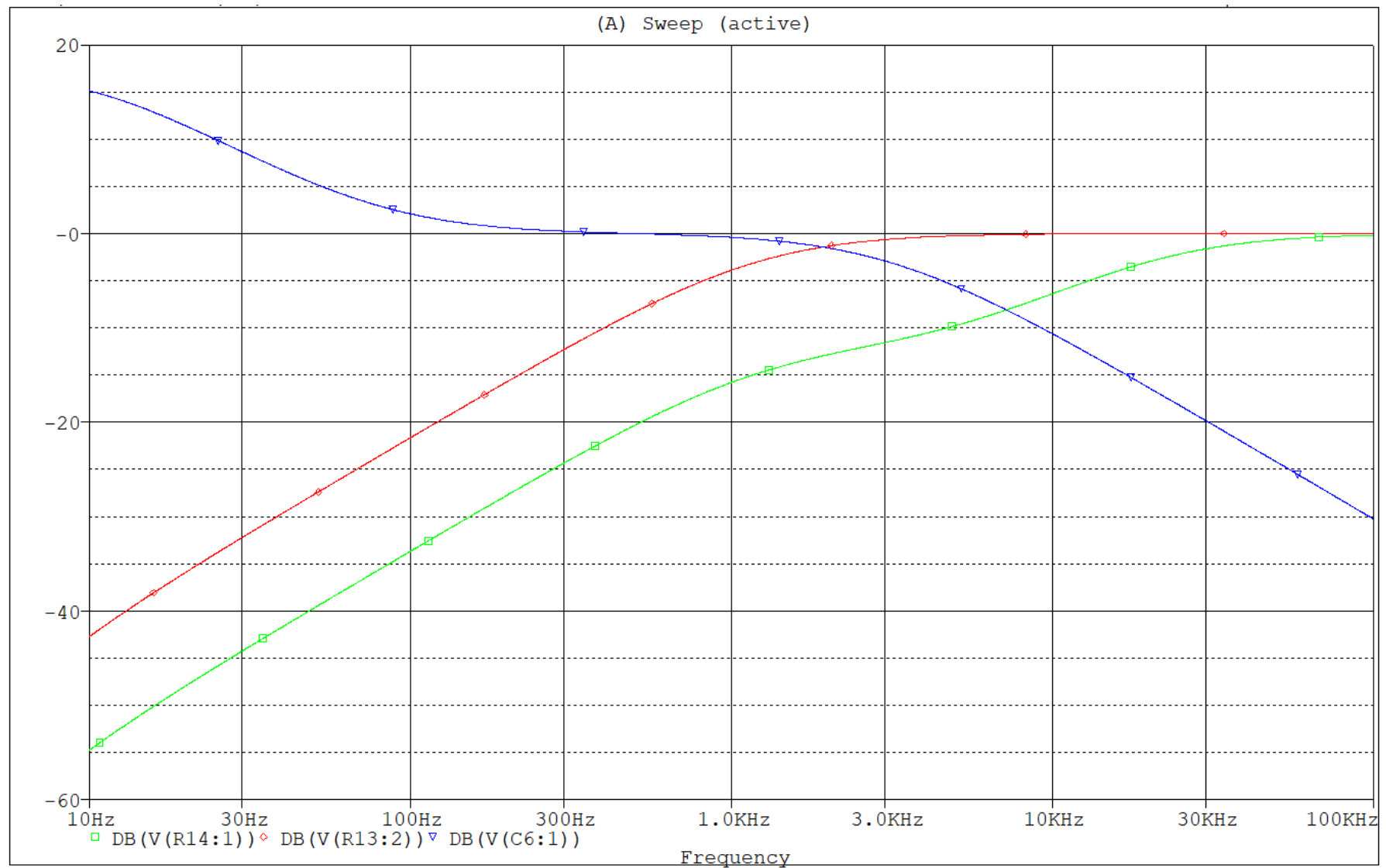
Trim 3:



Final trim:

Frq. End of the 15" moved up due to response issue at Xover.. (1100Hz). (C7). And Gain adj R4.





End for Journal .. 19-01-2020. Kitchen Crap OB speaker.